



12

DIVE CRUCI DICITUR AEDIFICIUM

BY HERRMANN NACHRECHTEN POTUM

~~28/06/2013,~~
MONUMENTS

~~28/06/2013,~~
MONUMENTS



~~The PDF~~

~~28/06/2013,~~
MONUMENTS



~~The PDF~~

~~28/06/2013,~~
MONUMENTS



~~The PDF~~

~~28/06/2013,~~ MONUMENTS

raumlaborberlin

in the frame of Le voyage
à Nantes 2013

a 3 phases project:
workshop

14.06. - 27.06.2013

intervention and
placements

28.06.2013

exhibition

01.07. - 01.09.2013

"Le 28.06.2013, la ville de Nantes fut conquise par l'Art."

"On the 28.06.2013, the city of Nantes was conquered by Art."

The work „**28.06.2013, MONUMENTS**“ by raumlabor is developed in three phases. Phase one is a phase of collective construction, dialogue, shared dinners and talks, the development of ideas, all this in the state of inhabiting the court of the Ecole des beaux Arts in the form of an art production camp. Phase two is the intervention in the city on the day of 28.06.2013. Phase three is the phase of memory to the 28.06.2013 in the form of an exhibition in the place of the production.

Phase one is dedicated to the procedural production, a

conceptual sharpening of the work and dialoge. Phase two is dedicated to a series of placements of the constructed objects in the city spaces, it is the moment of the surprising encounter of the public with the pieces of Art produced, it is the phase of Art appearing in the space of everyday life. Phase three is dedicated to the memory. The objects are on display, as well as some remains of the production workshop.

raumlabor came with a set of drawings, inspired by the poetic drawings of the american architect John Hejduk. In his sketches, he talks about a poetic reinterpretation of the trojan horse for and through architecture. raumlabor takes this inspiration and brings it into the arts, into the city of Nantes, into the public spaces of the city. During the

workshop the main narrative evolved, away from the military connotation of the trojan horse being a medium of attack and focussing on the object itself. Like this, the question of the possibility of the monument entered the conversations in the camp. The production shifted accordingly. Four movable monuments were built and two movable instruments.

A second inspiration was a conversation with Julieta Aranda after the panel "Questioning the Constraints of Time and the Unpredictability of the Creative Process". According to her, the time we perceive as presence has been identified as a duration of 6 seconds. But this time can be extended through different techniques, for example through meditation. raumlabor takes this inspiration to ask to extend the presence through

the medium of Art. The time element of the work is to place the built monuments in city spaces and let them rest, live with the city for a while. It's a proposition of a possibility. The phases of the work also follow this idea. The day 28.06.2013 became more and more important as a compression of time, of presence, of possibility in one day.

On the 28.06.2013 the workshop group teamed up with a lot of people from Nantes, to move the objects through the city together. Encountering the occasional daily city users mostly unexpected, the pieces started to create their own atmospheric layer in the city. Accumulated moments of intensity unfolded, when the public entered the inflated sphere, the monument to public space released a large and growing cloud of

smoke. From "le destin" you could hear seven bangs and turning around you discover a swarm of small paper stripes flying in the air. These two cloud like appearances immediately embraced the winds and started touching the city's hard surfaces.

The intervention itself was calm and slow. The monuments moved through the city quietly, moved by a group of workers. In their grey working dress making a reference to the workers dress of public services. The monuments were placed in specific positions in the center of the city, left alone to rest and become part of the scenery. Some of the monuments unfold momentary activities as an unforeseeable turn, a further compression in the creation of a temporary monument to the presence, to "us - here - now".





LIVRES D'OCCASION

EN 5 MINUTES
COURTESY
Tobias
Poggen



The six objects built are:

A. THE MONUMENT SECTION:

- 1 "le destin", the strange hairy looking cylinder
- 2 the tower of risk, including the inflatable space
- 3 the monument to public space
- 4 the obelisk on wheels

B. THE INSTRUMENT SECTION

- 1 the take-away wall
- 2 the observer with shifted perspective

THE MONUMENT SECTION

THE INSTRUMENT SECTION



the observer with shifted perspective

"le destin", the strange hairy looking cylinder

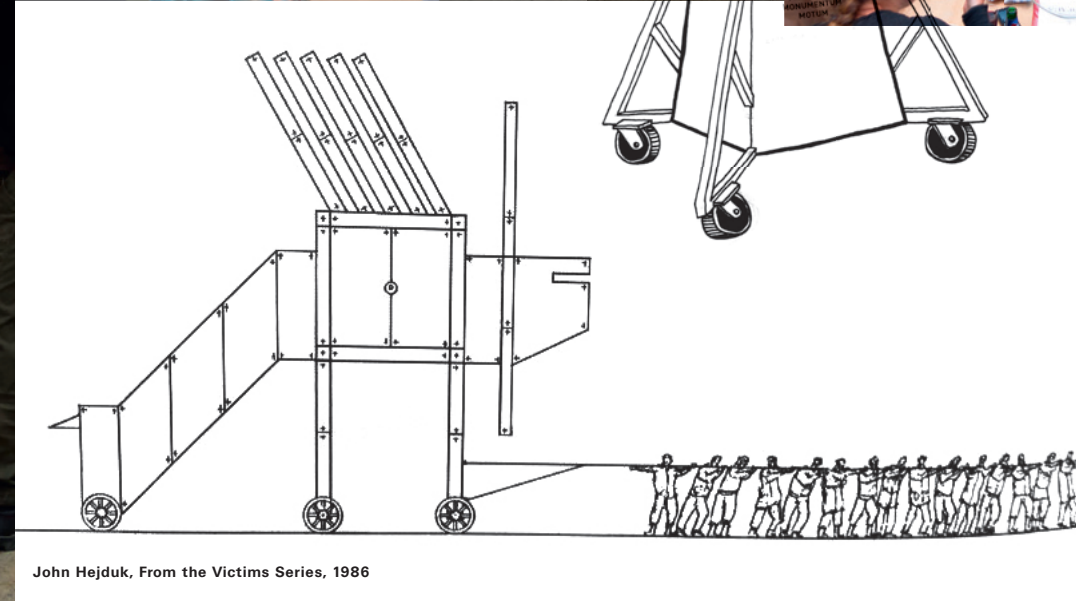
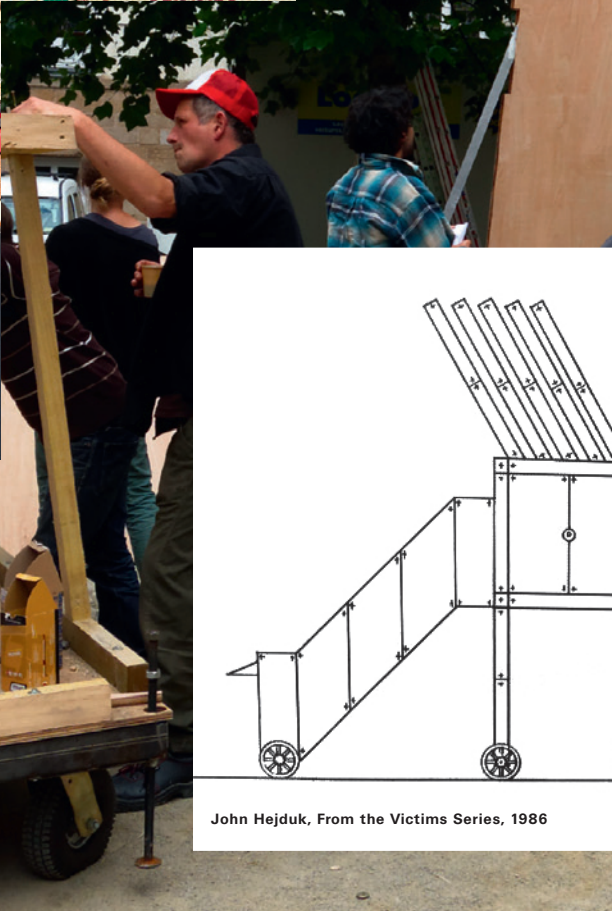
the obelisk on wheels

the take-away wall

the tower of risk, including the inflatable space

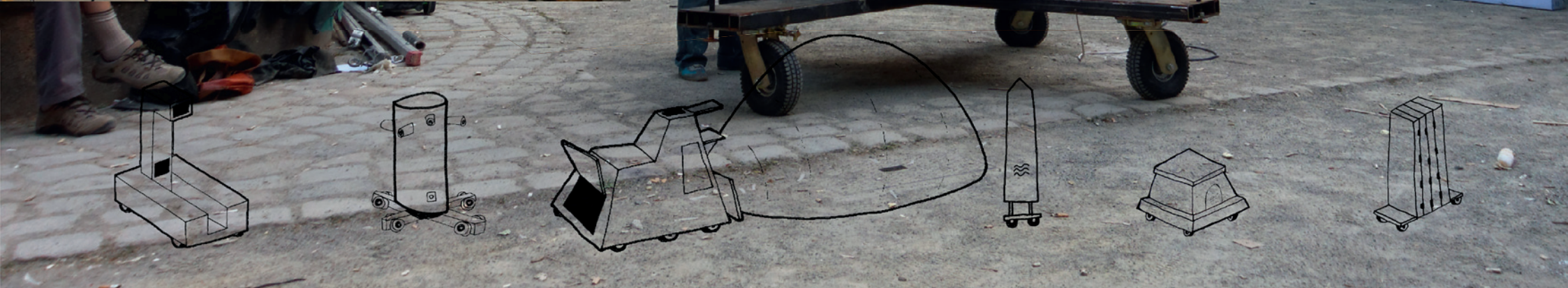
the monument to public space

**WORKSHOP
INSPIRATION
SKETCHES**



John Hejduk, From the Victims Series, 1986



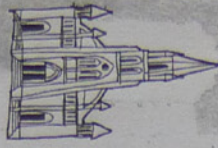


**PLACEMENTS
(DAY/NIGHT)**

DAY/



Eglise Saint-Nicolas



arrivée 17.15
départ 18.15

PLACE DU
CHANGE

16.15 arrivée
16.45 départ

16.15

Eglise
Sainte-Croix



PLACE
DU BOUFFAY



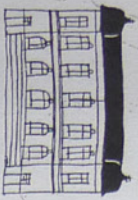
GALERIES
LAFAYETTE

arrivée 15.40
partage balls: 16.15

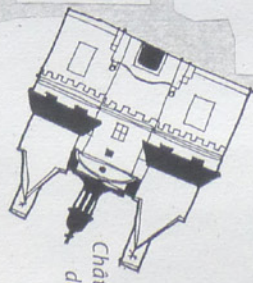
PLACE
DU PILORI
15.40

Départ
ÉCOLE DES
BEAUX-ARTS
19.00
supébu

Hôtel de Ville



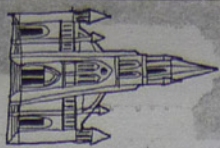
PLACE DE LA
CATHÉDRALE
arrivée 15.00
départ 15.20



Château des ducs
de Bretagne

/NIGHT

Église Saint-Nicolas



PLACE DU CHANGE

arrivée 22.40
23.15 départ

GALERIES LAFAYETTE

arrivée 23.15
23.30 départ

Hôtel de Ville



ÉCOLE DES BEAUX-ARTS
2.1.30
retour 2.00

PLACE DU PILORI

22.40 arrivée
23.00 départ

PLACE DU BOUFFAY

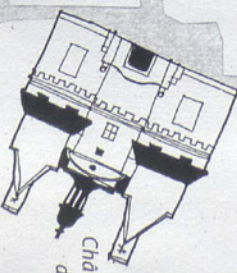
arrivée 23.00
23.15 départ

Église Sainte-Croix



PLACE DE LA CATHÉDRALE

arrivée 22.00
22.20 départ



Château des ducs de Bretagne

NUIT

LE DESTIN

iron, wood, weels, till glue, 7 cannons charged with 1,2kg black confettis (afternoon), white (night), red button

total weight ~300kg

On the 28th of june 2013, in the Bouffay area in Nantes, **LE DESTIN** was activated to create a temporary fluid space three times in the afternoon and three times at night. The seven cannons released floating clouds of small paper stripes, that were taken by the wind to fly and float around the place.

Placements: Place St. Pierre, Place du Pilon, Rue de la Marne, Place de l'Ecluse, Allée Flesselles.

A1-p.19









THE TOWER OF RISK

iron, wood, weels, till glue, paint, inflatable space, fans, ballast, turkish carpets, sofas'skin

total weight ~950kg

On the 28th of june 2013, in the Bouffay area in Nantes, **THE TOWER OF RISK** was placed in front of the department store «Les Galeries Lafayette». A large inflatable space was opened inside the store's handbag department, creating an interim space of art between public street space and the private shopping space inside.

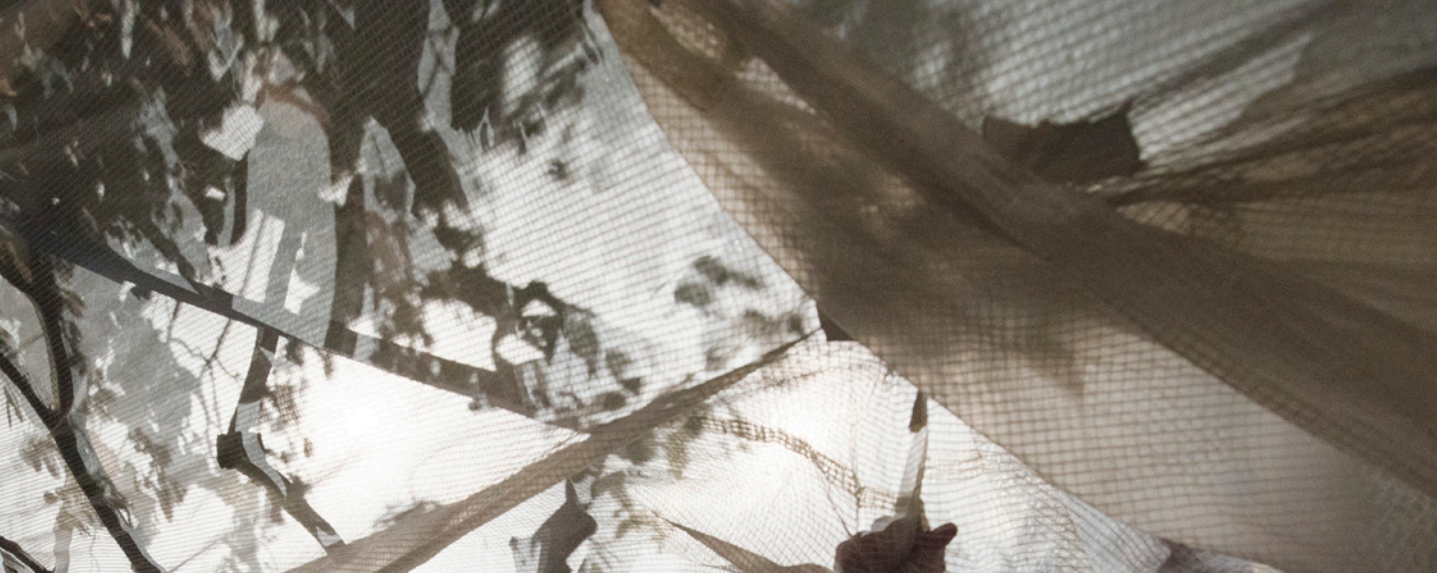
Further placements: Place St. Pierre, Place de l'Ecluse, Rue Haute Casserie, Allée Flesselles.

A2-p.24

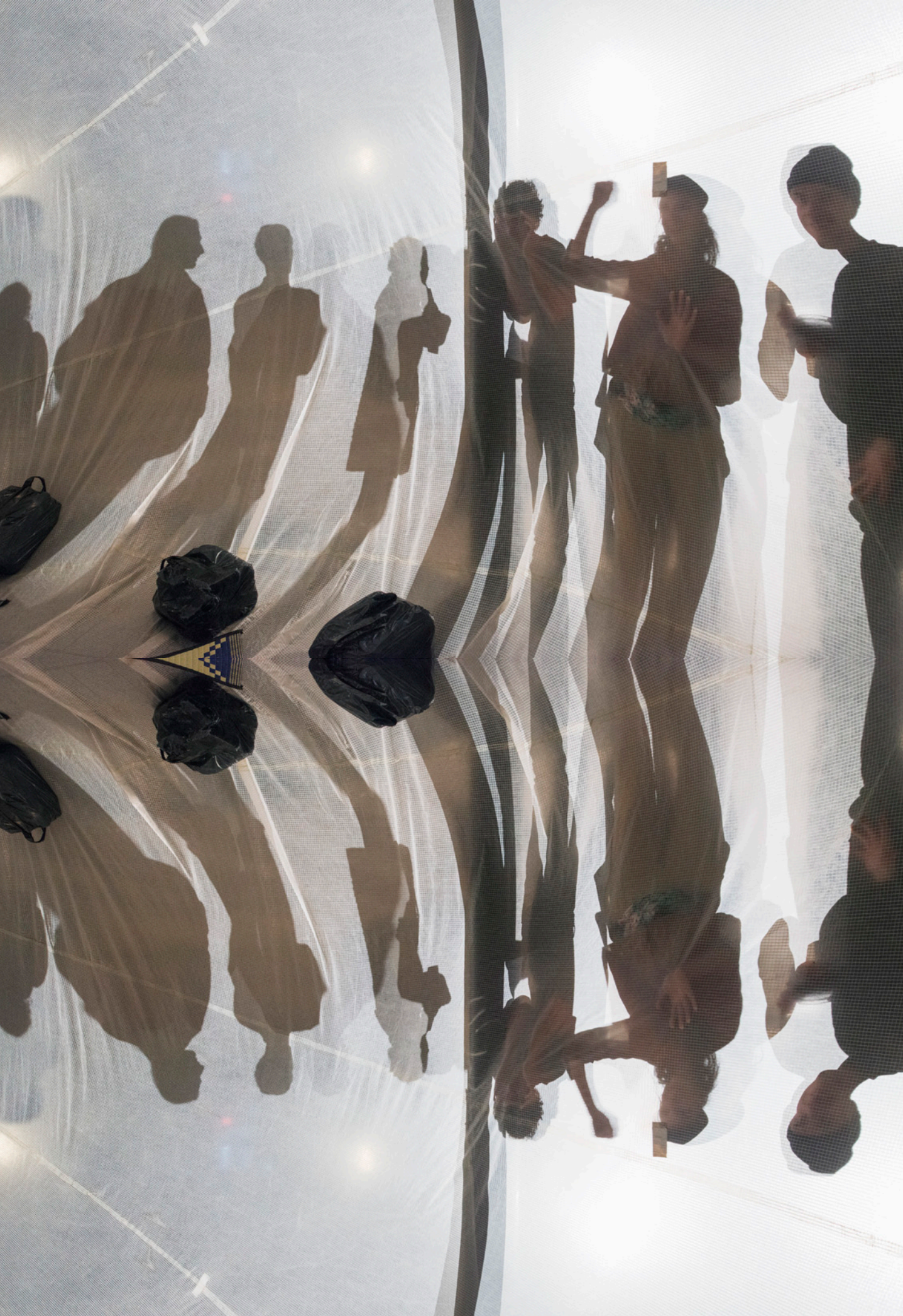
















THE TAKE-AWAY WALL

wood, weels, paint, camouflage net, total weight~200kg

On the 28th of june 2013, in the Bouffay area in Nantes, **THE TAKE-AWAY WALL** was first placed in Place du Pilon. It creates an arbitrary separation between front and behind. It seperates conditions by obstruction and visual filter.

Further placements: Place St. Pierre, Place Ste. Croix, Place de l'Ecluse.

B1-p.33





THE OBSERVER WITH SHIFTED PERSPECTIVE

iron, wood, weels, paint, mirrors, directional microphone, loudspeakers, car battery, camera

poids weight ~400kg

On the 28th of june 2013, in the Bouffay area in Nantes, **THE OBSERVER WITH SHIFTED PERSPECTIVE** followed the Monuments to their placements and made accoustic and visual recordings.

Placements: Place St. Pierre, Place du Pilon, Place de l'Ecluse, Rue Haute Casserie, Allée Flesselles.

B2-p.36

PIZZA







THE MONUMENT TO PUBLIC SPACE

iron, wood, wheels, till glue, iron container, ropes, smoke bombs

total weight ~400kg

The **MONUMENT TO PUBLIC SPACE** looks like a plinth lacking a sculpture. On it's wheels it was placed in Place du Change, for example, where it offered it's second ability - to release a large cloud of smoke, as a moving and ephemeral sculpture.

Placements: Place St.Pierre, Place Piloni, Place du Change, Place de l'Ecluse, Allée Flesselles

A3-p.40















Librairie *L'autre-Rive*

THE OBELISK ON WHEELS

aluminium structure, wood, weels, paint

total weight ~120kg

On the 28th of june 2013, in the Bouffay area in Nantes, **L'OBÉLISQUE SUR ROUES** was first placed in Place du Pilon. As passive object with distinct shape and historic reference, L'OBÉLISQUE SUR ROUES incorporates the biggest paradox of the made Monuments. Made to stay for thousands of years, now so light, that one person can move it.

Placements: Place St. Pierre, Place du Pilon, Rue de la Marne, Place Ste. Croix, Place de l'Ecluse, Allée Flesselles.

A1-p.19

AM I A
MONUMENT









~~28/06/2013,~~
MONUMENTS

Credits

A project by:
raumlaborberlin

In the frame of:
Le voyage à Nantes 2013

Dates:
Workshop: 14.06. - 27.06.2013
Intervention and Placements:
28.06.2013
Exhibition: 01.07. - 01.09.2013

Places:
Workshop and Exhibition:
Court of the Ecole des Beaux
Arts
Placements: Place St.Pierre,
Place Pilori, Galerie Lafayette,
Place du Change, Rue de la
Marne , Place Sainte-Croix,
Place de l'Ecluse, Rue Haute
Casserie, Allée Flesselles

Team:
raumlabor: Markus Bader,
Claire Mothais, Todosch,
Marius Busch, Samuel Car-
valho, Nora Schmitt, Camille

Lemeunier
Students of the Ecole des
Beaux Arts: Eli Bessis, Marie
Lépine, Xavier Cormier, Cecile
Serres, Jeremy Knez
Voyage a Nantes: Lena
Chevalier, Joel Fleury, Michael
Fauchoix «Micky»
The people of Nantes for the
Intervention

Special thanks to Nicolas and
Philippe

Invited by Voyage a Nantes:
David Moinard, Artistic Director

Supported by Voyage a
Nantes: Gregoire
Cartillier, Technical Director

All photos by Le Voyage à
Nantes, 2013
© Martin Argyroglo

Except for:
pages 14,15
Photos by raumlaborberlin

Except for:
pages 31,32,37,45,46,51
Photos extracted from the film
«Monuments»
by Machine Machine TV,
Dorothee Lorang and David
Beautru
Le Voyage à Nantes, 2013
© Machine Machine TV

Almost all drawings by:
raumlaborberlin

PDF Design:
The Laboratory of Manuel
Bürger



CENTRAL
100m →

DEME BOUFFAY
100m ←

TALENSAC
100m ↑

LE COMPTOIR IRLANDAIS

LE COMPTOIR IRLANDAIS
SOLDES
50% de réduction

FRANCAIS

~~28/06/2013,~~
MONUMENTS

<http://www.raumlabor.info>

~~The PDF~~

work/ print/ read

